

ROUNDNESS & CYLINDRICITY TESTER

Rondcyl 500

- Low cost
- High Accuracy
- Large Measuring Capacity
- Heavy Duty Air Spindle
- PC Controlled
- User Friendly Software
- Data Storage to Disk
- Measuring Cycle Program



ϕ Cylindricity

○ Roundness

◎ Concentricity

// Parallelism

① Co-axiality

□ Flatness

⊥ Squareness

ISO 9001
COMPANY

**Kudale
Instruments
Pvt. Ltd.**





Rondcyl 500

has been designed to meet manufacturers requirements for fast, high accuracy, simple operation and at a price that can be justified.

It is a rugged instrument which can be comfortably used in the laboratory as well as on the shop floor.

It is a low cost solution for Roundness and Cylindricity Measurements.

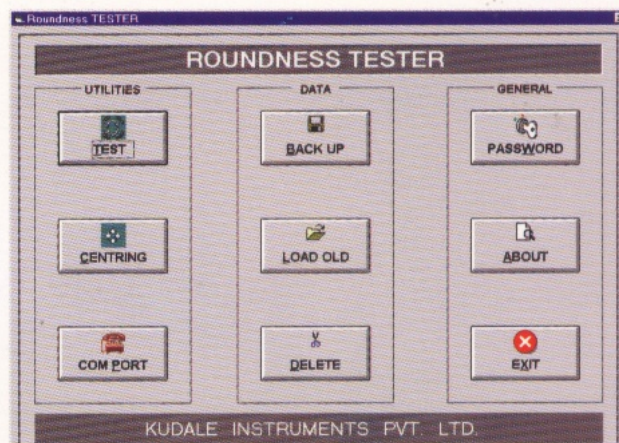
Rondcyl 500

has a large measuring capacity that can accommodate the majority of components needed to be analysed for geometric form. It meets the stringent demands on quality assurance in global environment.

Rondcyl 500

The cylindricity is measured by collecting roundness data between 3 to 10 levels and then plotting graph.

Assessment of the following can be achieved using the Roundcyl 500.



▲ User friendly option Menu.

COMPREHENSIVE SOFTWARE ANALYSIS

Rondcyl 500 uses an IBM compatible computer with standard peripherals. You have the option to use your own hardware, provided it meets the specification criteria.

Communication between the computer and operator is via a simple drop down menu enabling the operator to use the Rondcyl 500 with minimum training.

Once a component is measured, results can be further analysed changing filters, magnifications, centring correction eliminated.

Results can be stored on the PC hard disk or on floppy and reanalysed at a later date.

Different measuring sequences can be saved on hard disk enabling the Rondcyl 500 to be used in semi automatic mode.

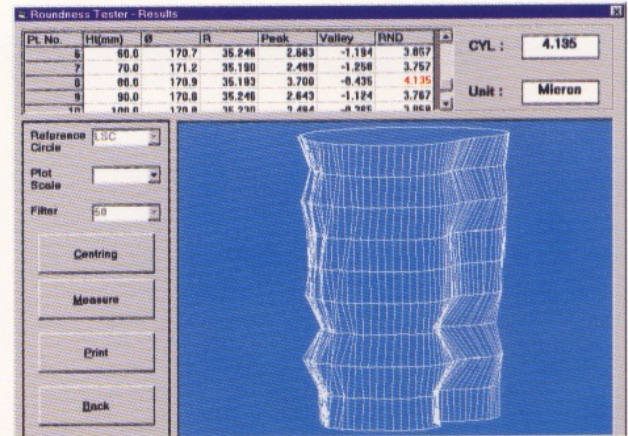
Roundness Tester - Load Old

Search Criteria		Current Test Info	
Test Type	Roundness	Part Code	KIL T
Part Code		Component Code	Hino (OE)
Operator Code	A. S. SAYYED	Operator Code	A. S. SAYYED
Ref A	PD/D/65	Ref A	PD/D/65
Ref B		Ref B	20 mm FROM BASE
From		Test Date	12/07/02
To		Test Time	11:46:53 AM
		Component Test Number	5

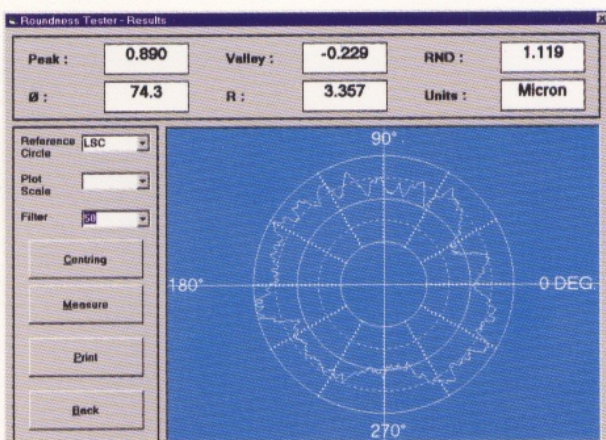
Now Displaying Record: 224 of 243 Go To Record Number: 224

Previous Find Next View Result Back

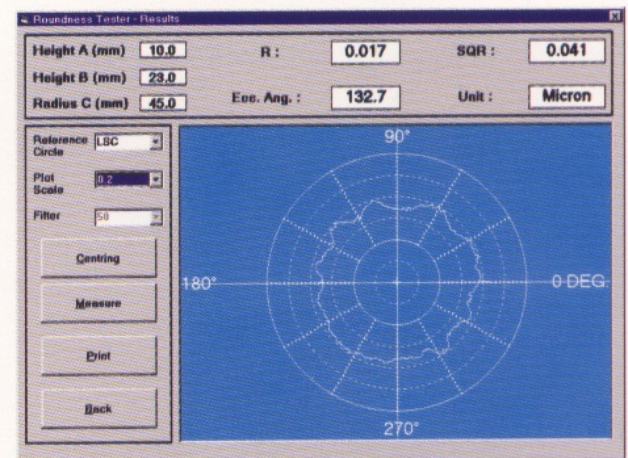
▲ User friendly option Menu.



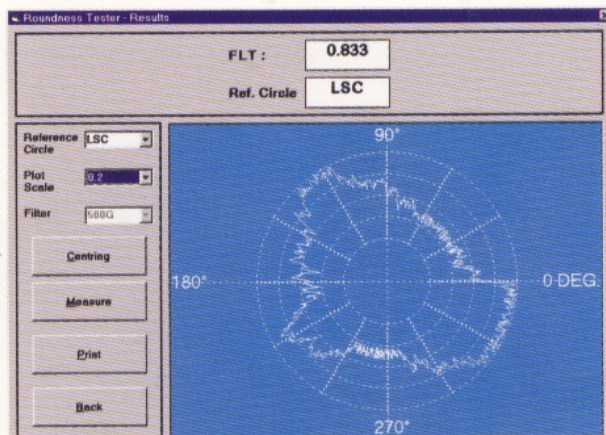
▲ Cylindricity Test through software.



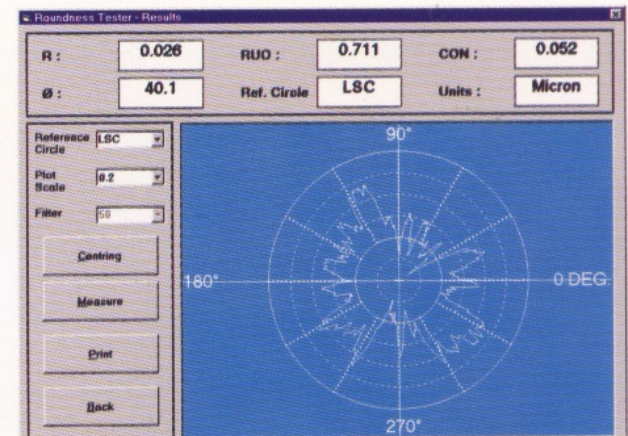
▲ Roundness Measurement.



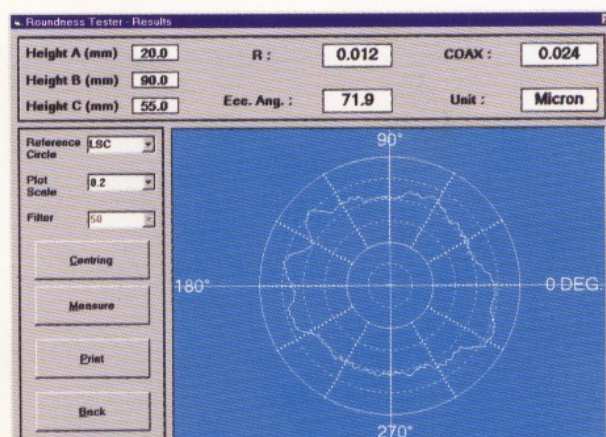
▲ Squareness Measurement.



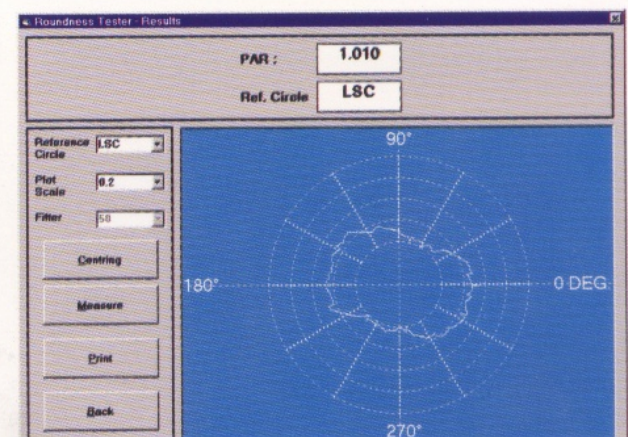
▲ Flatness Measurement.



▲ Concentricity Measurement.



▲ Co-axiality Measurement.



▲ Parallelity Measurement.

SPECIFICATIONS

MEASURING CAPACITY

- | | |
|-------------------------------------|--------|
| a) Maximum Diameter | 500 mm |
| b) Maximum height above spindle top | 500 mm |
| c) Maximum workpiece weight | 25 kg. |

VERTICAL COLUMN

- | | |
|--------------------|--------|
| a) Vertical Travel | 320 mm |
|--------------------|--------|

HORIZONTAL TRAVEL

250 mm total

MEASUREMENT METHOD

- | | |
|----------------------|---|
| a) Measurement Range | Lever type gauge head, miniaturized friction movement probe ± 300 mm with std. stylus |
| b) Contact Points | 2 mm ball Dia (Steel) |
| c) Gauging force | 0.16 N (approx) |

ROTARY SPINDLE

- | | |
|--------------|---|
| a) Diameter | 200 mm, air bearing (mounted directly on Granite plate) |
| b) Rotations | Clockwise 6 rpm |

TILT & CENTERING TABLE

- | | |
|---------------------|------------------------|
| a) Diameter | 220 mm |
| b) Load Capacity | 25 kg. (Balanced load) |
| C) Spindle Capacity | 50 kg. at 3 Bar |
| | 120 kg. at 6 Bar |

MEASUREMENT PARAMETERS

- a) Cylindricity
- b) Roundness
- c) Concentricity
- d) Co-axiality
- e) Circular flatness
- f) Squareness
- g) Parallelism

AIR PRESSURE

3 - 6 kg / cm² - G

AIR CONSUMPTION

45 Ltr / min.

POWER REQUIREMENTS

approx, 500 Watts,
220 V
+ 10 %, 50 Hz.

DIMENSIONS AND WEIGHTS

- | | |
|---------------------------------------|------------------------------------|
| a) Air Bearing spindle base and stand | |
| - Dimension approx. | 720 x 450 x 900 mm.
(L x W x H) |
| - Weight approx. | 120 kg |



Manufactured by :

**Kudale Instruments
Pvt. Ltd.**

**Mikrotech
Sales & Service**



Correspondence Address

Precision House, 98A/7, Hadapsar Industrial Estate, PUNE - 411 013. (INDIA). Phone No.: +91(20) 6872068, 6870567 Fax : +91(20) 6875383
Email : msands@vsnl.com, sales@kudaleinstruments.com Website : www.kudaleinstruments.com