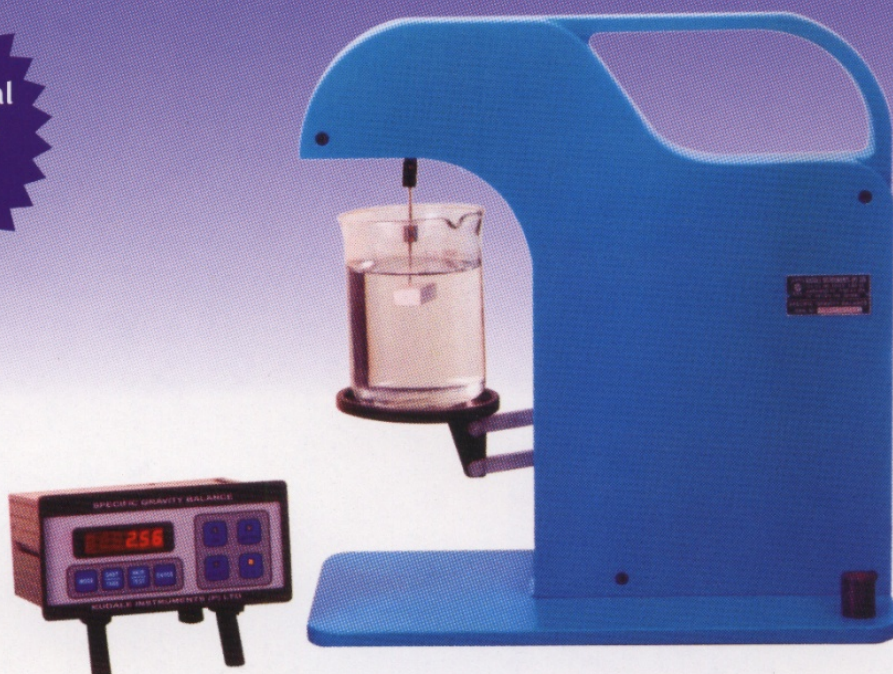


Electronic Specific Gravity Balance

Easy Scientific Formulation to Develop Your Product

Multifunctional
Options with
Greater
Precision



ELECTRONIC SPECIFIC GRAVITY BALANCE

is useful for checking the S.G. of various liquids and materials weighing up to 99.99gms.

INTRODUCTION

The microprocessor based technology used in ELECTRONIC SPECIFIC GRAVITY BALANCE helps to achieve higher accuracy. The high resolution controls the measurement uncertainty of the parameter under test.

The ELECTRONIC SPECIFIC GRAVITY BALANCE gives the value of 'SG' directly. It is useful for liquids as well as solids.

Range : 0.9 to 25
L.C. : 0.0001

The Instrument is used to measure the Specific Gravity by following three methods :

- In Water : Solid sample testing in water.
- In Liquid : Solid sample testing in another liquid.
- Of Liquid : Liquid sample testing with known solid sample.

APPARATUS

The apparatus consists of a cast Iron structure along with a beaker stand to mount the test specimen. The instrument is fitted with Load cell, connected to multi-functional Digital Readout System, having RS232 port for interfacing PC. This system is operated by keyboard on DRO of the machine and the print out of the data as a result of testing can be obtained by suitable software, which is available as an optional accessory.



Manufactured by -

KUDALE INSTRUMENTS (P) LTD.

"Precision House", 98A/17, Hadapsar Industrial Estate, Pune - 411 013 (India)

Tel.: +91 (20) 26870567 26872068 Fax : +91 (20) 26875383

E-mail: msands@vsnl.com • sales@kudaleinstruments.com • kudale@vsnl.com

We reserve the rights to alter designs and specifications without prior notice.



Group Companies : • Mikrotek • Mikrotek Sales & Service • Kudale Calibration Laboratory (P) Ltd.

www.kudaleinstruments.com